

# DISTRICT COOLING

Chiller Plant

Cooling Towers

Steam Boilers

<sup>®</sup>FEMCO  فیمکو





18,000 Ref. Ton

## DISTRICT COOLING PLANT IN COMMUNITY AREA, JUBAIL

FEMCO is a multidisciplinary one of the leading EPC Saudi Contractors, with being considered as an industry leader in Infrastructure, District Cooling Plants, Buildings, Water & Power, Industrial Plants and other related construction facilities, as received many prestigious contracts which were successfully completed all over the Kingdom, with more than 25 years of experience.



FEMCO's operations are expanding at accelerated pace with focus on vital areas. We have created a robust system to construct and operate district cooling plants according to the highest world-class standards. We also keep abreast with all the Saudi Arabia future plans, to make sure we are always able to meet the demand from new projects while maintaining the quality of service.





26,220 Ref. Ton



## KING ABDULAZIZ UNIVERSITY NORTHERN AREA – WADI JEDDAH

FEMCO aims to meet customers' requirements by having continuous improvement on its technical departments and taking advantage of today's technology and manufacturing techniques in comply with the latest industrial and sectoral applications. Innovative solutions are one of FEMCO's goal for sustainable development and to show its difference in the market.



FEMCO aims to create the appropriate environment for improving quality of life by providing facilities and amenities that help enhance the lifestyle of students and academicians in the King Abdulaziz University. Our agreement for the provision of the latest eco-friendly cooling and conditioning systems is a major step towards achieving this objective.



17,676 Ref. Ton

## GIRLS COLLEGES IN AL RAYYAN COMPLEX, DAMMAM

Through its rich resources coupled with the financial strength, effective operational system, extensive experience in the field of construction and engineering as well as the high quality of technical and managerial staff, FEMCO recognizes any challenge posed by new projects regardless of the size or complexity of the project with its commitment to competitive prices and compliance to all quality standards.



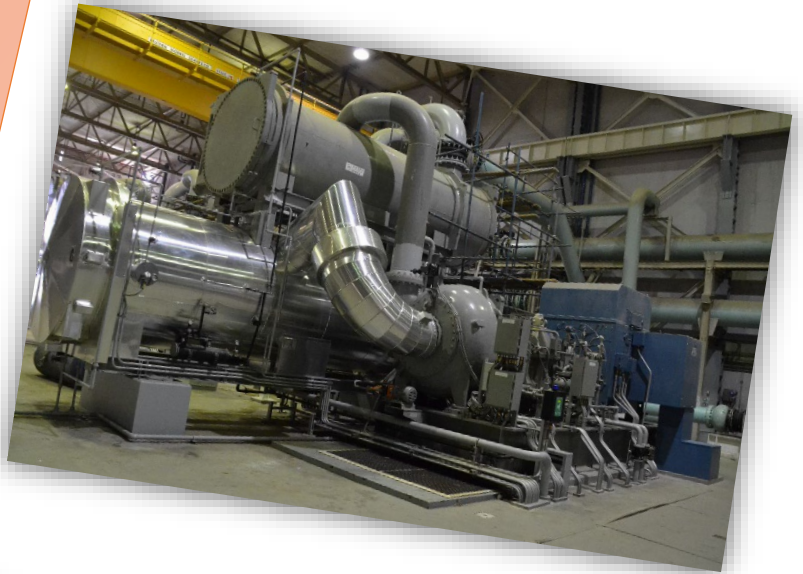
FEMCO has a strong track record in offering excellent services leveraging the possibilities of technology, make his clients confident by delivering great quality district cooling solutions in order to achieve clients' overarching goal of making Girls Colleges in Al Rayyan Complex in Dammam a modern landmark.



30,000 Ref. Ton

## CENTRAL CHILLER PLANT AT KING SAUD UNIVERSITY, RIYADH

A well-documented  
 "Construction Safety and Loss  
 Prevention Plan" is prepared  
 by FEMCO which is  
 implemented at all project  
 sites with management's  
 commitment to maintain a  
 high standard of protection  
 for all company employees  
 and also those of our sub-  
 contractors and clients.



King Saud University is one of the largest universities in the region, with a main campus area of 9.5 million square meters, not only in Saudi Arabia, but also in the Middle East. The cooling infrastructure of the university was renovated with the title of having the largest Chiller cooling capacity of the period in Saudi Arabia, and it was developed to serve many buildings, including additional service buildings and faculties.



12,900 Ref. Ton



## COOLING DISTRICT FOR KFU TEACHING HOSPITAL, AL-AHSA

FEMCO will continually strive to enhance this Plan and Standards in all phases of construction from initial planning through overall construction, including final commissioning and start-up operations. FEMCO employees are charged with responsibility of providing and maintaining the highest degree of "Safety & Health" performances and protection of environment and safety of others effected by our work.



Teaching Hospital for King Faisal University in Al-Ahsa has been designed for turning medical centers into medical parks became a global trend so the methodology and approach was conceptualized to follow this trend. In addition, considering the value of the area (Al-Ahsa), which is considered the biggest oasis in the world, the design team tended to articulate the site as a natural & medical oasis. The site was designed as one big oasis divided into three small oases: the first oasis includes the hospital, the second oasis includes the housing, and the third oasis was suggested to become a future extension for medical use.





28,350 Ref. Ton

## KING FAISAL UNIVERSITY PERMANENT CAMPUS, AL-AHSA

*FEMCO has also been recognized for its reliability, flexibility and strong execution track-record, as all the projects undertaken by FEMCO were executed with high quality and expert management and a workforce dedicated to their work.*



Infrastructure for King Faisal University Permanent Campus was designed by providing a motive sight axis inside the university campus with connection members between each other, taking into consideration the special conceptions related to lands usages, correlation between sight and circulation thru distributing the elements and principal movements circulations in the project. In the master plan it is considered the satisfaction of several group of architectural and building aspects, economical environment, traffic to satisfy the sustainability concept fully.

## OUR MAJOR CLIENTS



FEMCO Tower, King Saud Road  
Al Safa, Dammam 34222

9200 23595

www.femco.com.sa





**FEMCO Tower, King Saud Road  
Al Safa, Dammam 34222**

**☎ 9200 23595**

**[www.femco.com.sa](http://www.femco.com.sa)**